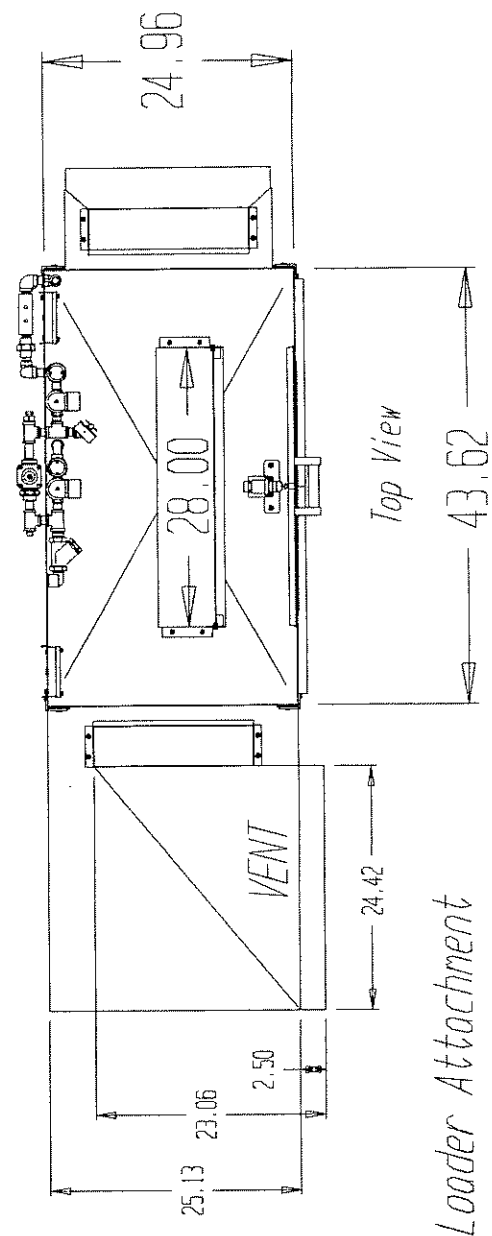


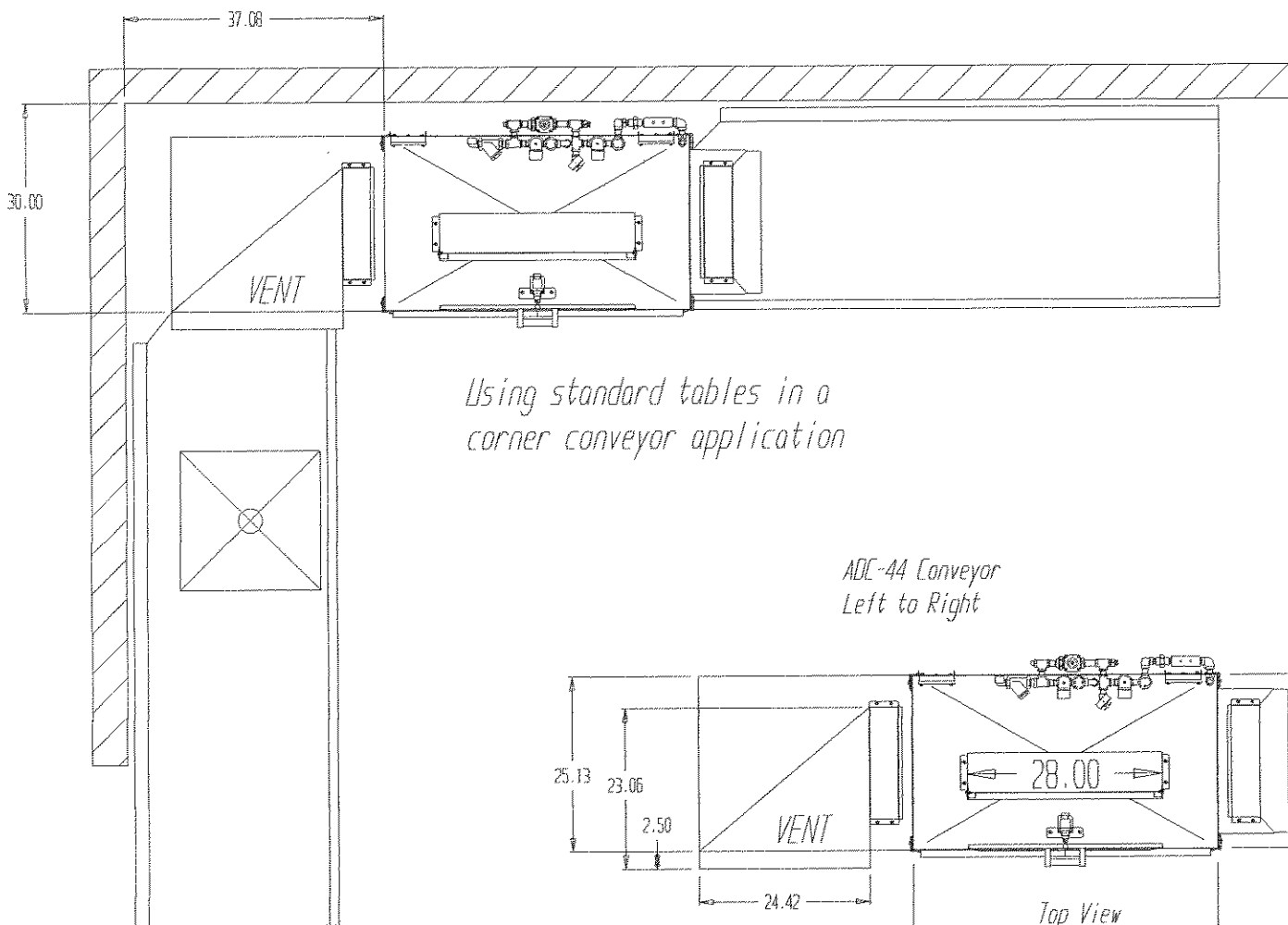
*Using standard tables in a
corner conveyor application*

*ADC-44 Conveyor
Left to Right*

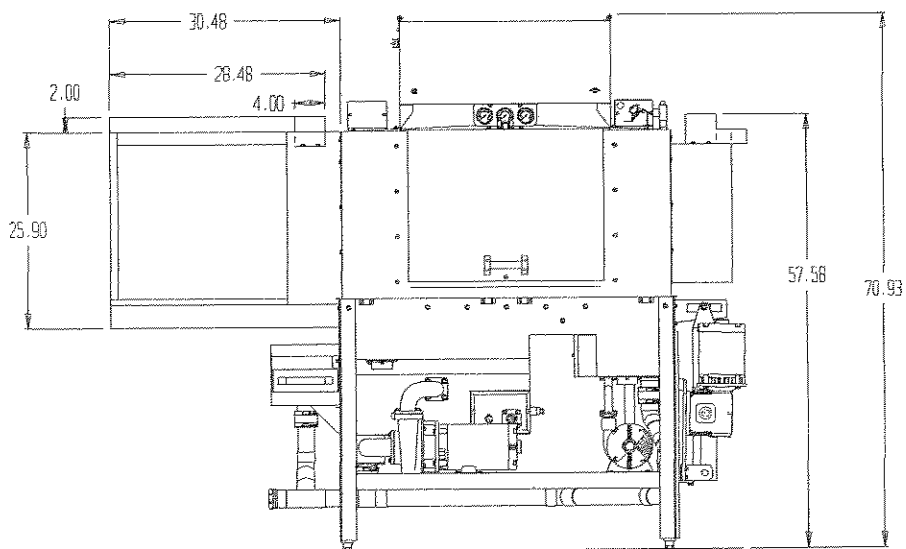


Loader Attachment

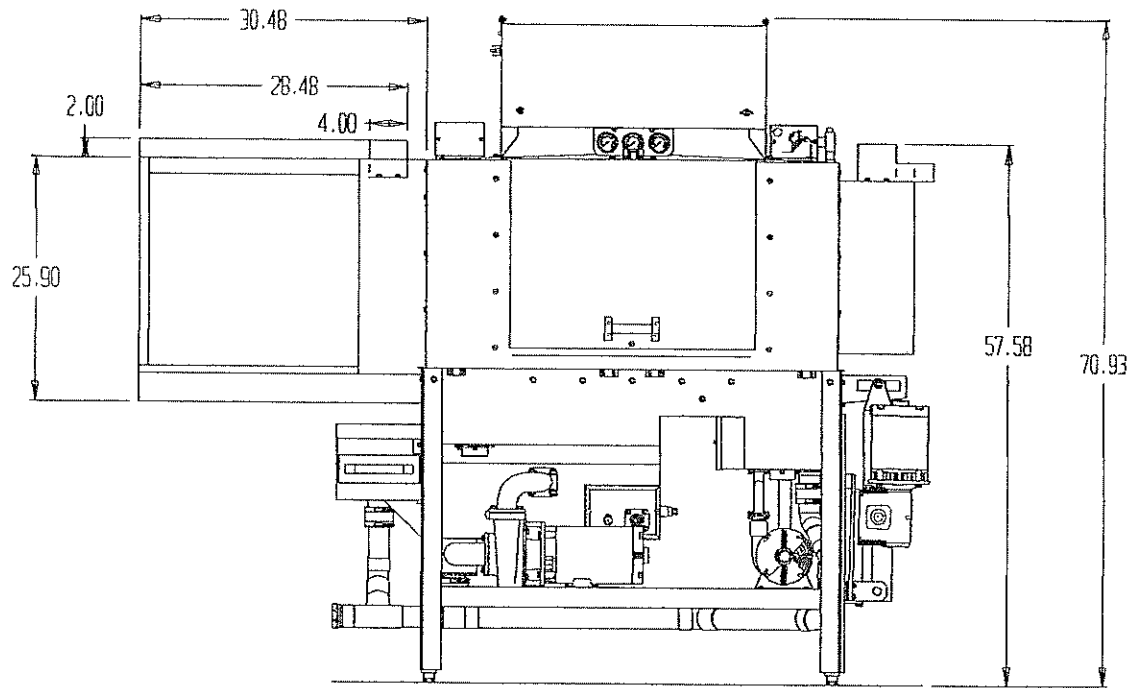
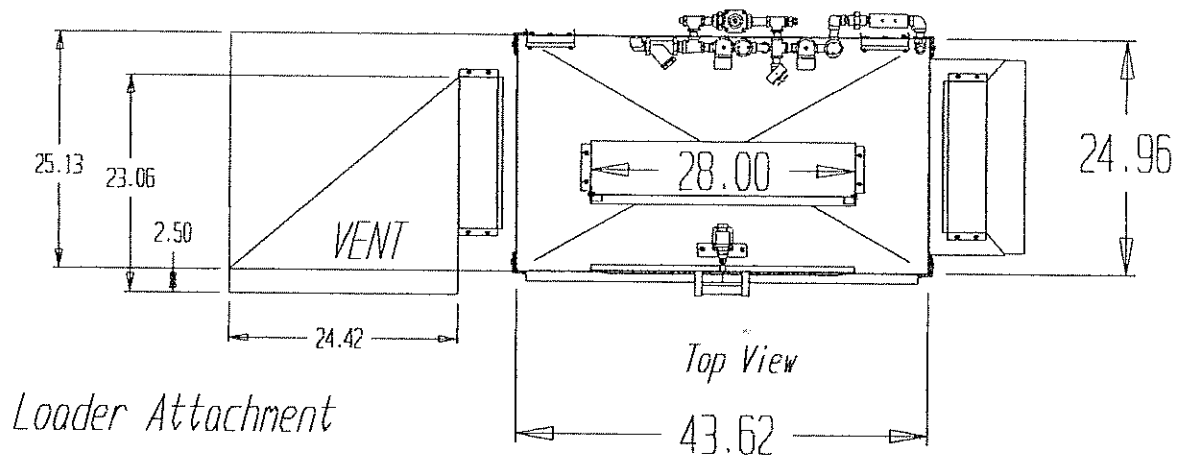
Top View



Loader Attachment



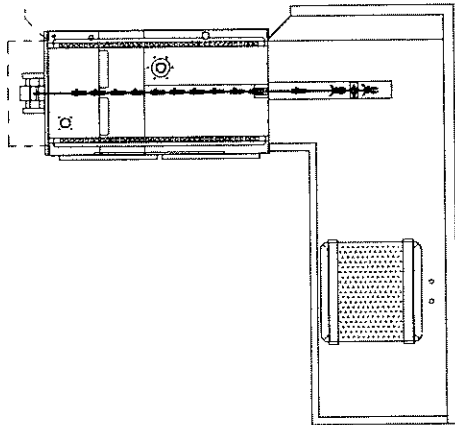
ADC-44 Conveyor
Left to Right



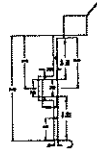


AMERICAN DISH SERVICE
MANUFACTURERS OF DINE SERVICE EQUIPMENT

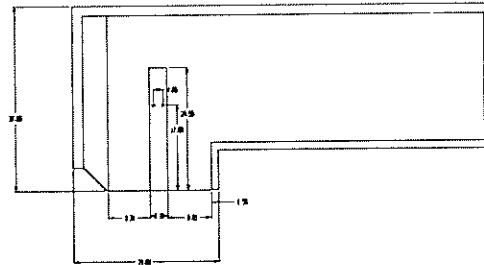
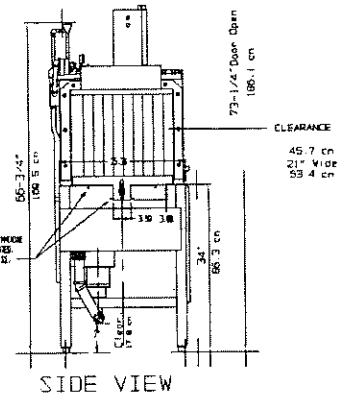
SUBJECT: SIDE-LOADER SPEC
DATE: 1/9/97
SCALE: FULL
DRAWING NUMBER: ADCN-LOADER
DRAWN BY: R. PAYZANT
PHONE: 913 384 6555 FAX: 913 432 0902

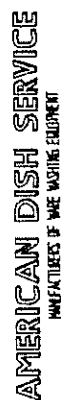


NOTE: RIGHT HAND FEED SHOWN

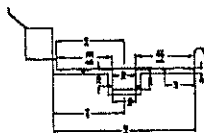


NOT: ONLY DIMS TO MACHINE
AT 1/4" TYPICAL INDICATED
USE 1/4" KEY BOLT, ETC.

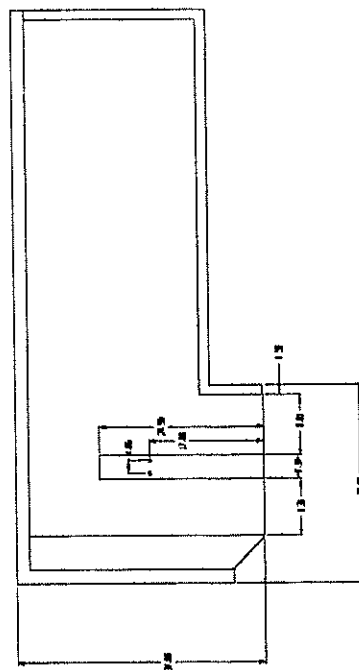
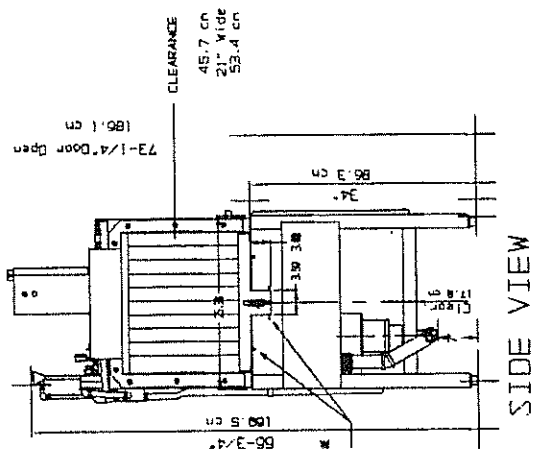


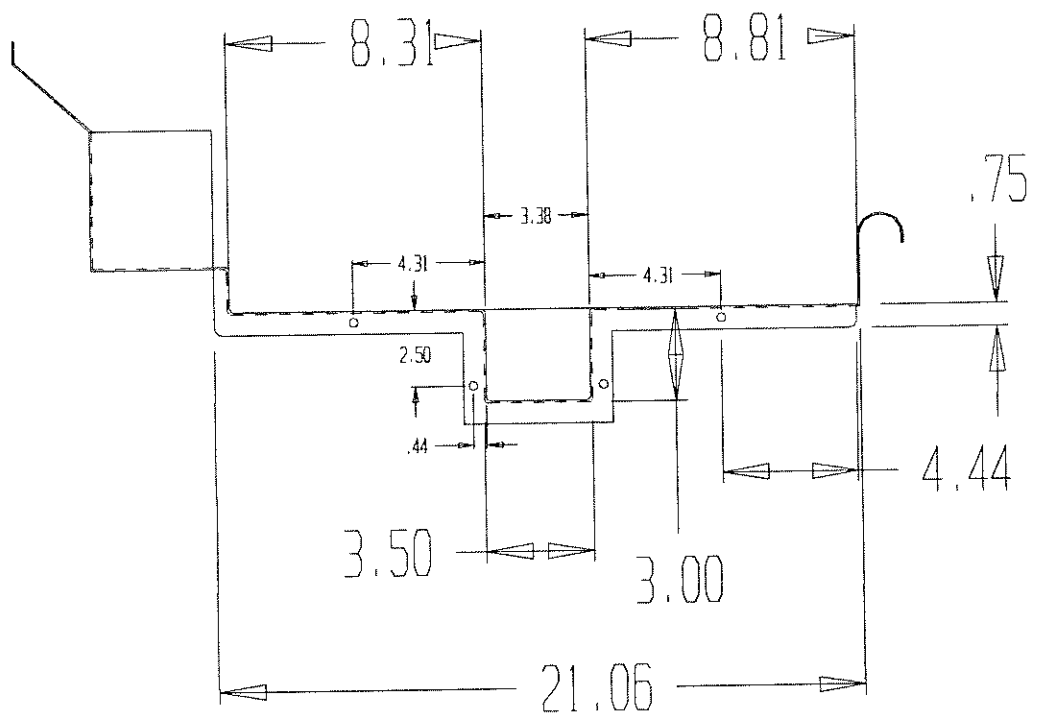


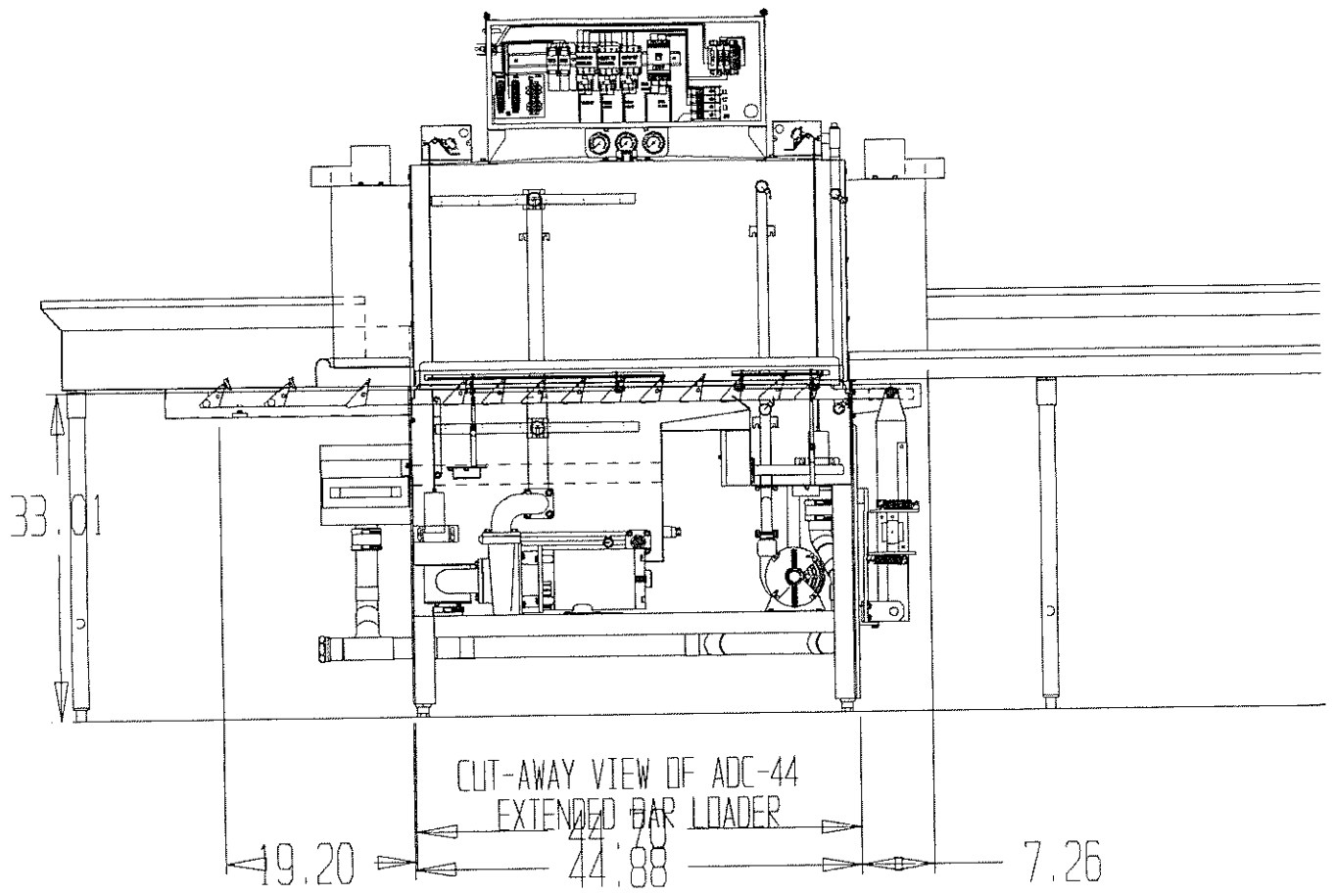
PHONE: 913 384 6555 FAX: 913 432 0902

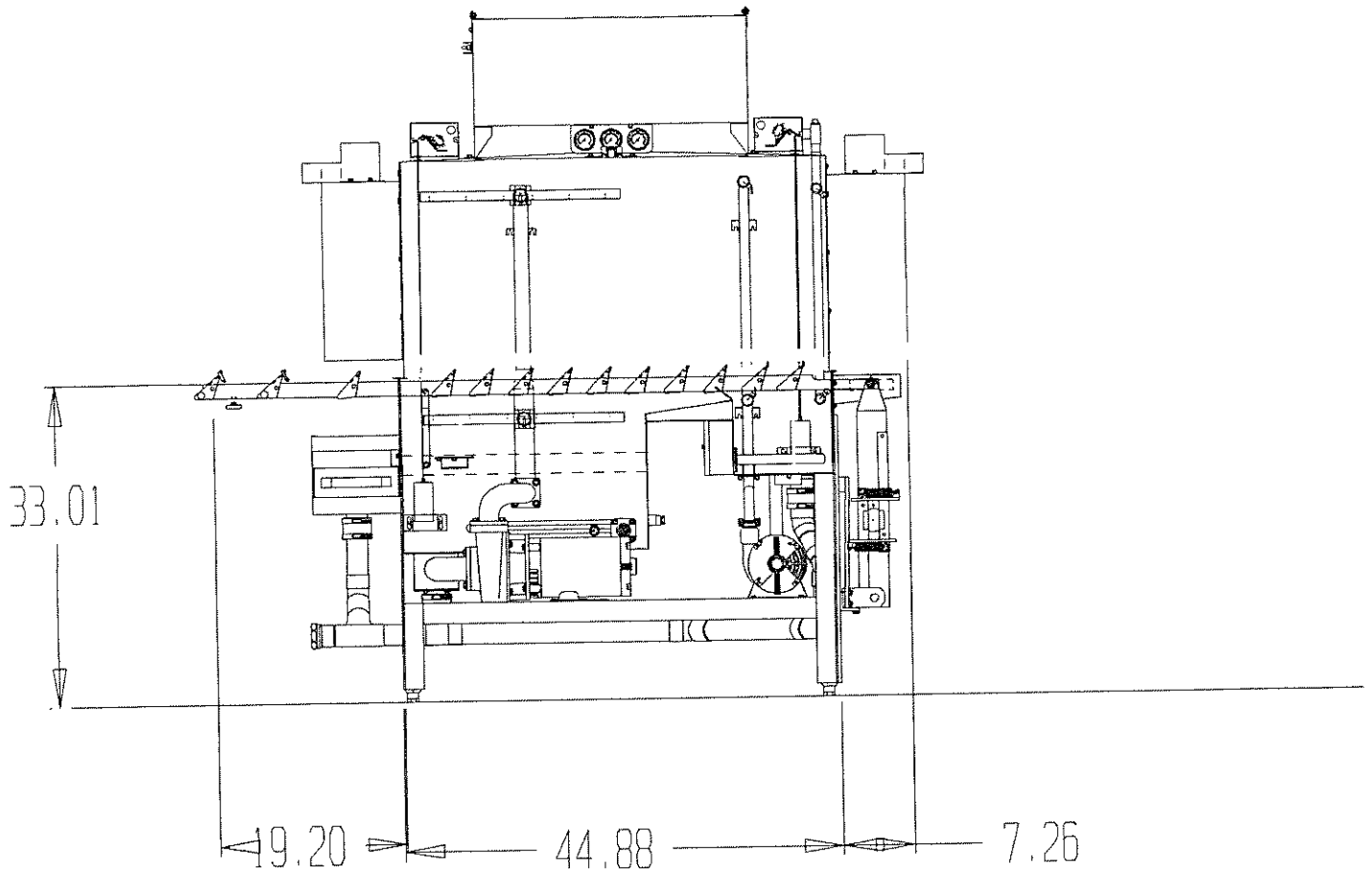


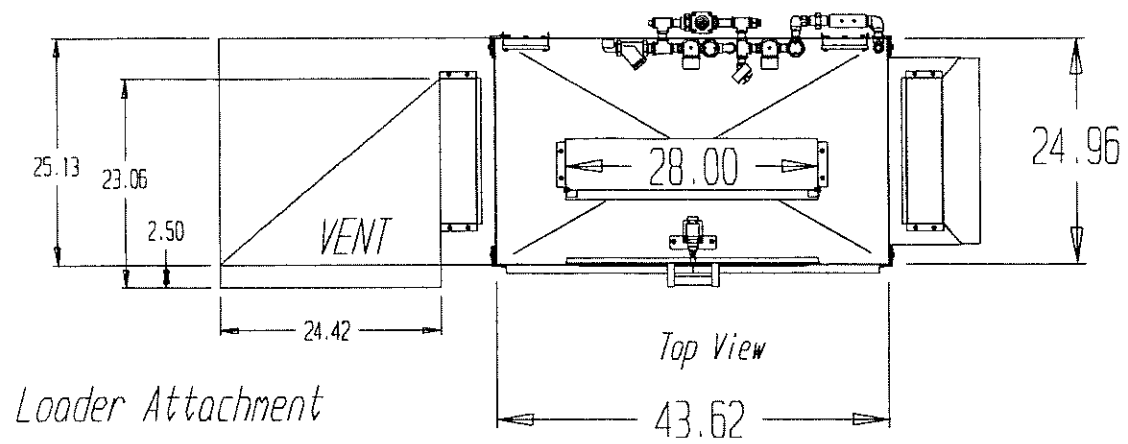
NOTE: ONLY TAPLE TO HOLD
AT 16) POINTS BACKLASH.
USE 1/4" HEX BOLT, S.



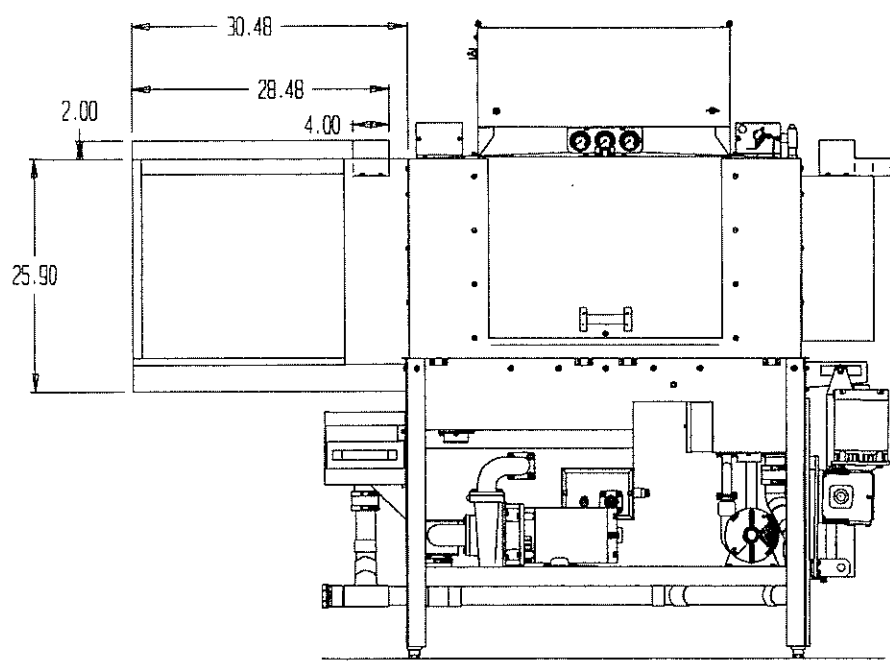








Loader Attachment



Front View