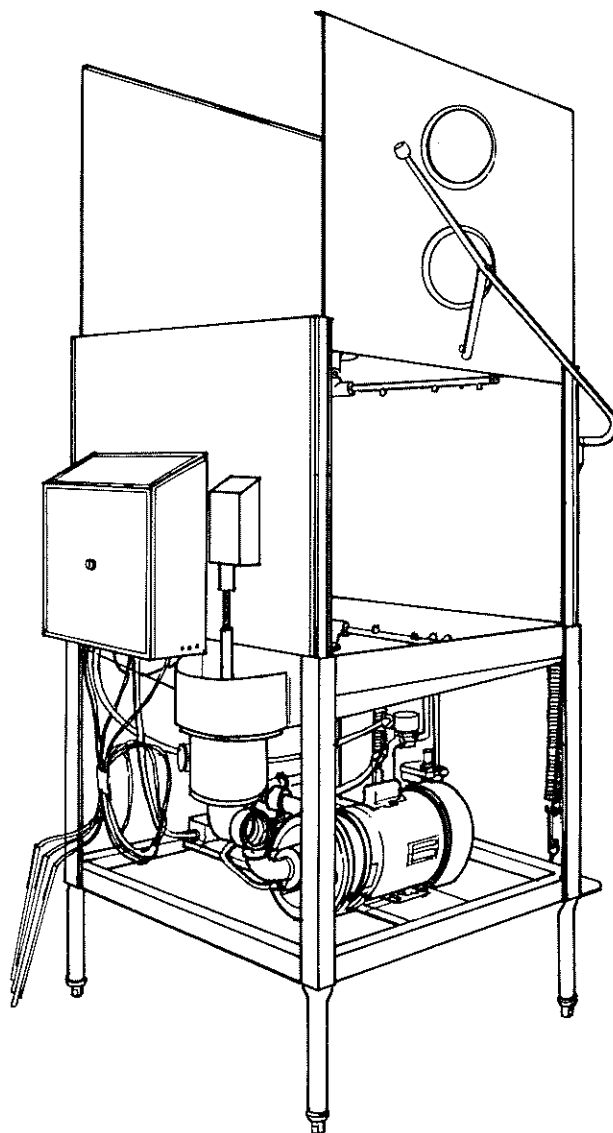


MODEL AF

MODEL A



PARTS MANUAL

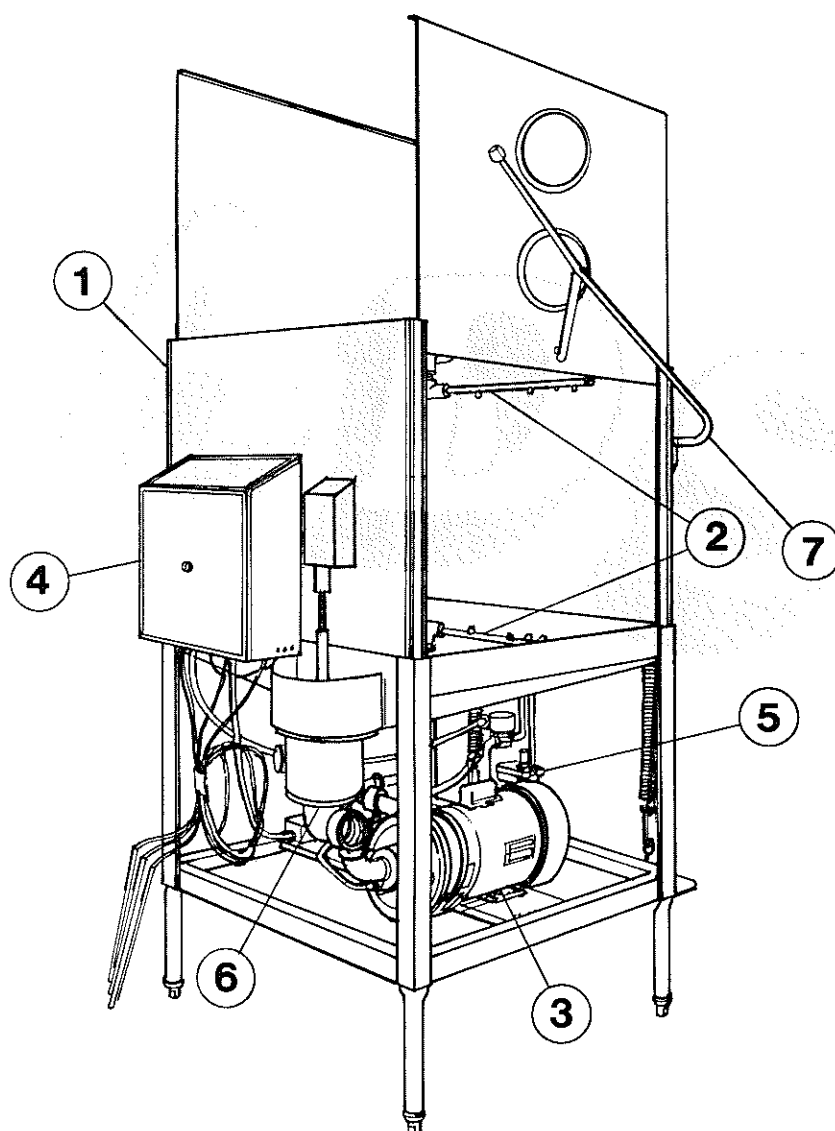


— AMERICAN DISH SERVICE —

**COMMERCIAL
DISHWASHERS**

900 Blake Street
Kansas City, KS 66111
913-422-3700

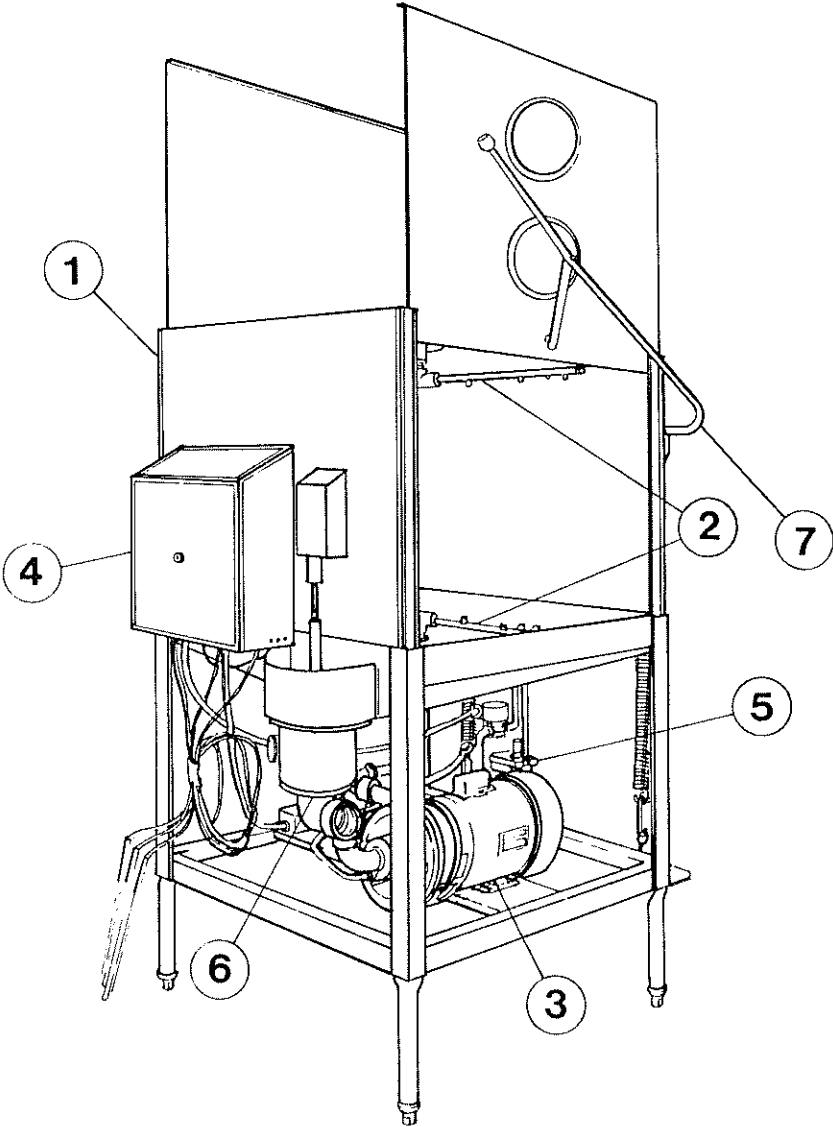
11-0090
MODEL AF
DISHMACHINE
(90 seconds)



MODEL AF DISH MACHINE
(90 SECONDS)

[illegible]

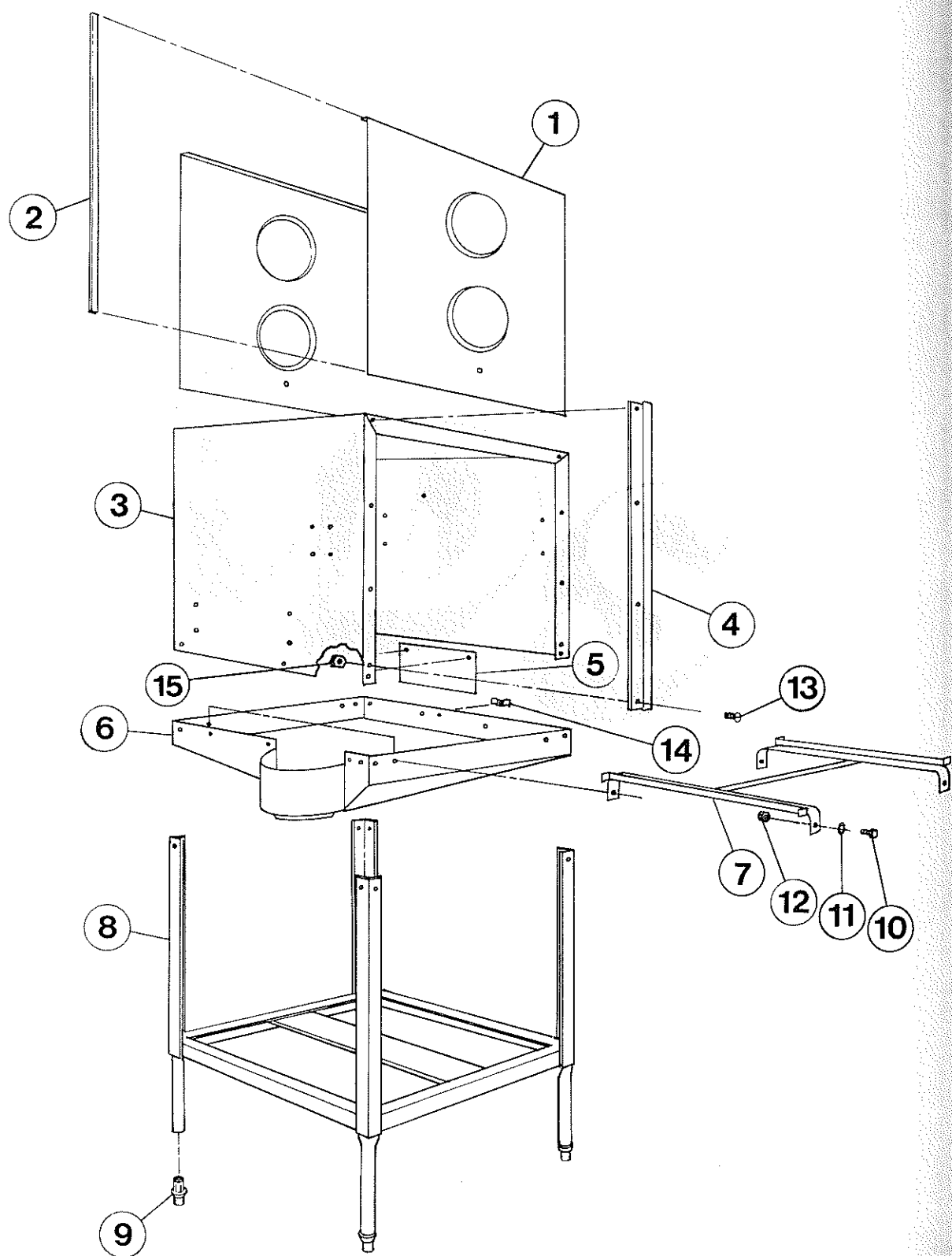
11-0120
MODEL A
DISHMACHINE
(120 seconds)



MODEL A - DISH MACHINE
(120 SECONDS)

[illegible]

CABINET ASSEMBLY

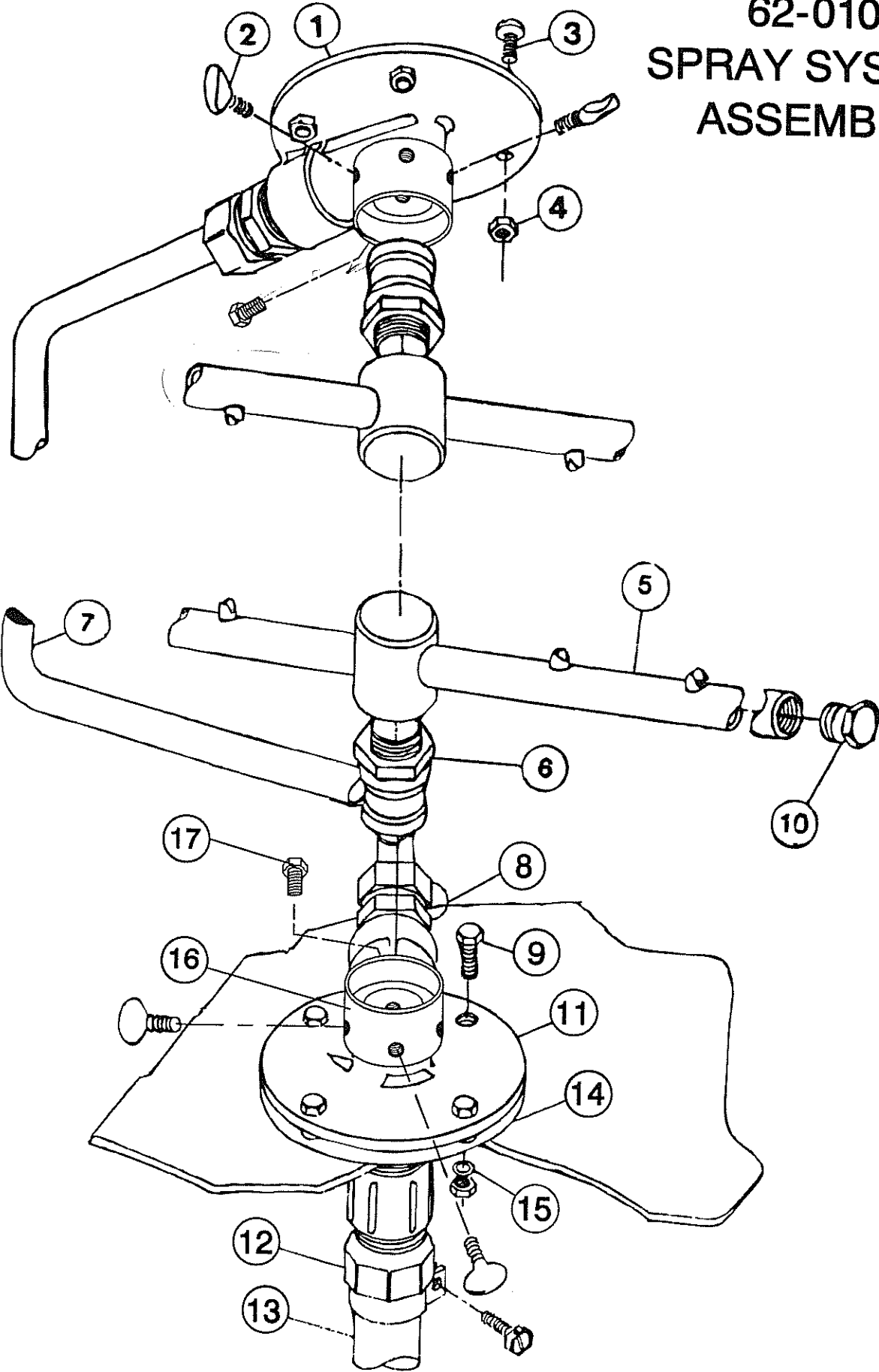


61-0100

American Dish Service

[illegible]

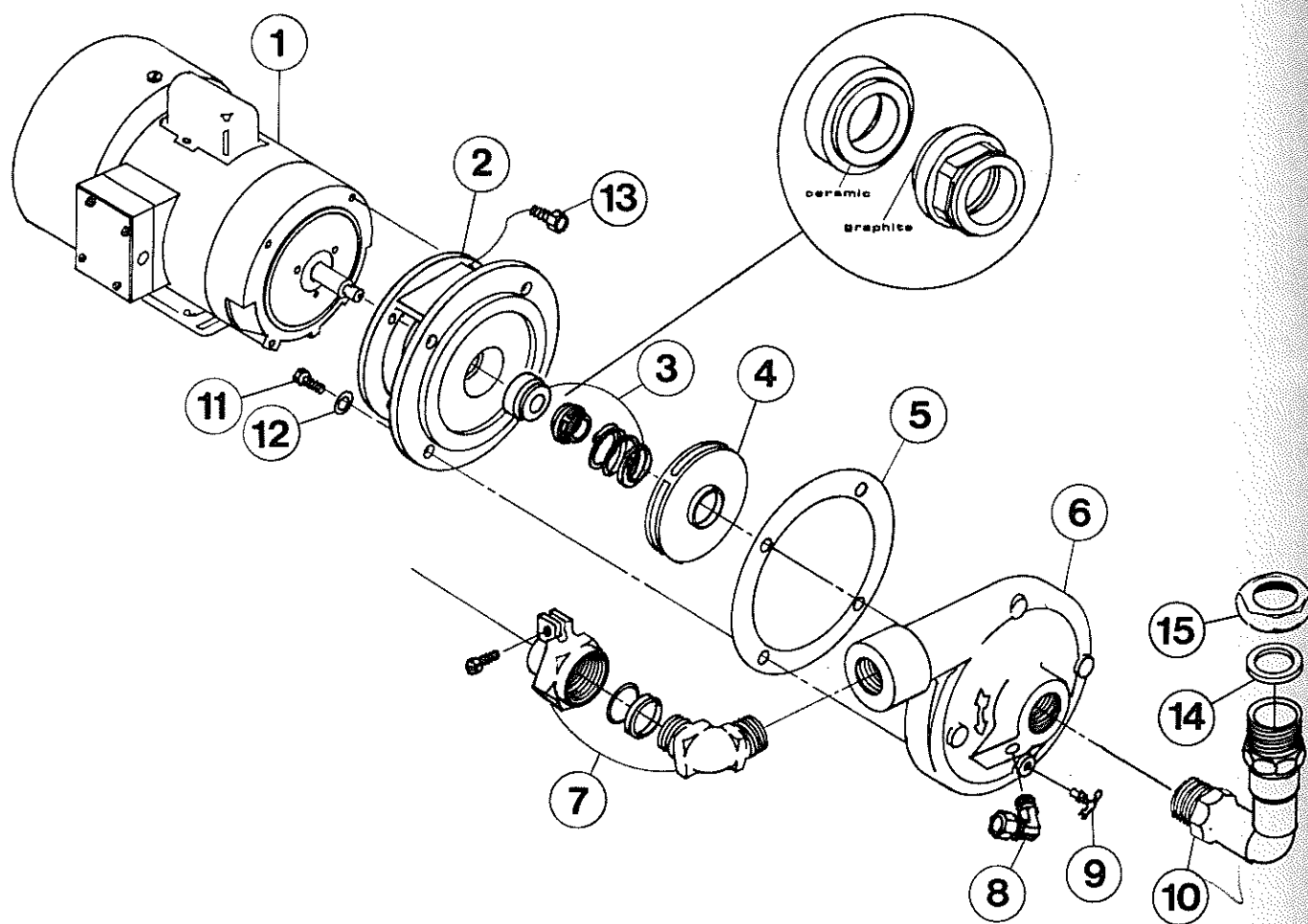
62-0100
SPRAY SYSTEM
ASSEMBLY



American Dish Service

Page 9

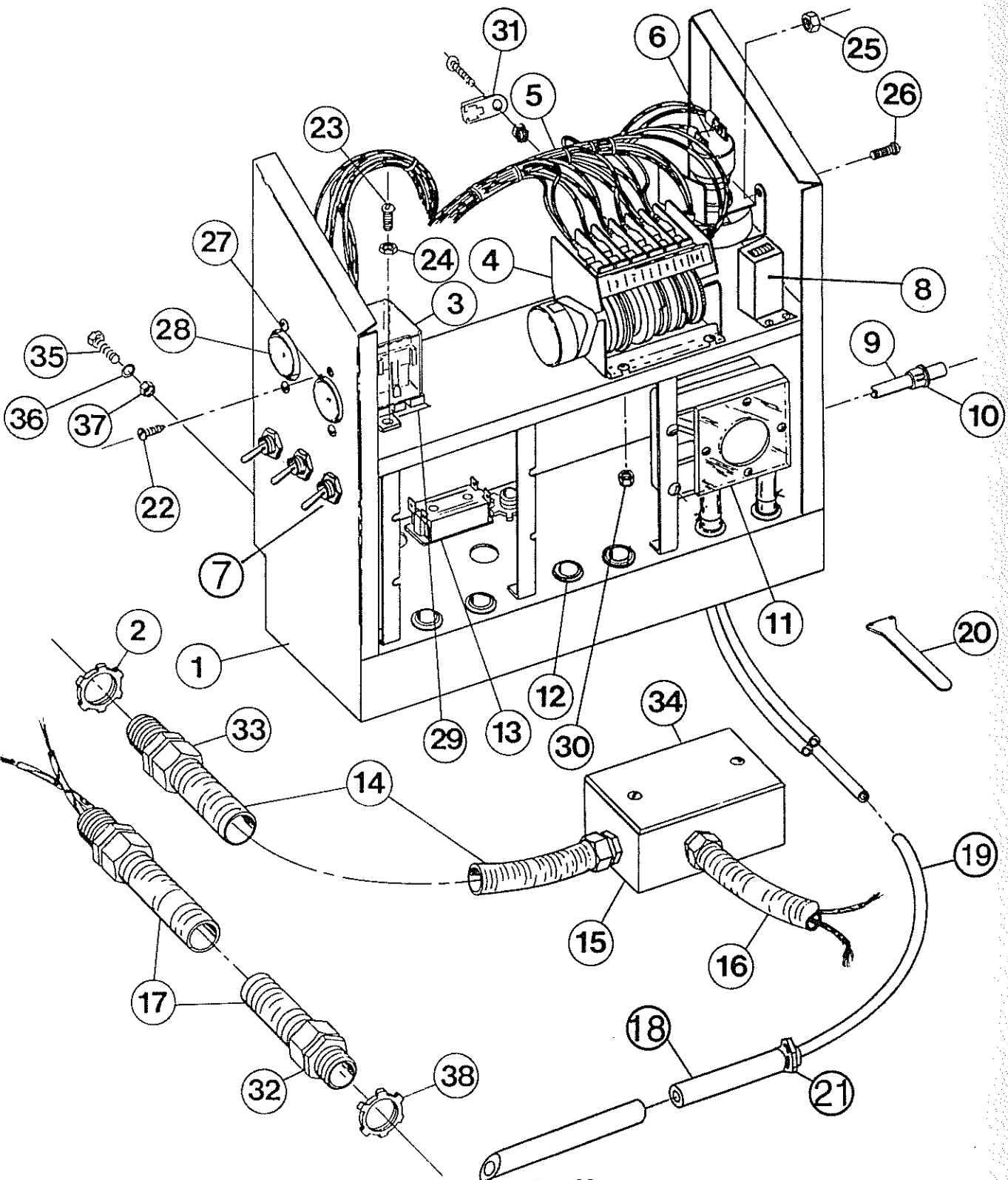
RECIRCULATING PUMP ASSEMBLY



RECIRCULATING PUMP ASSEMBLY

[illegible]

CONTROL SYSTEM ASSEMBLY

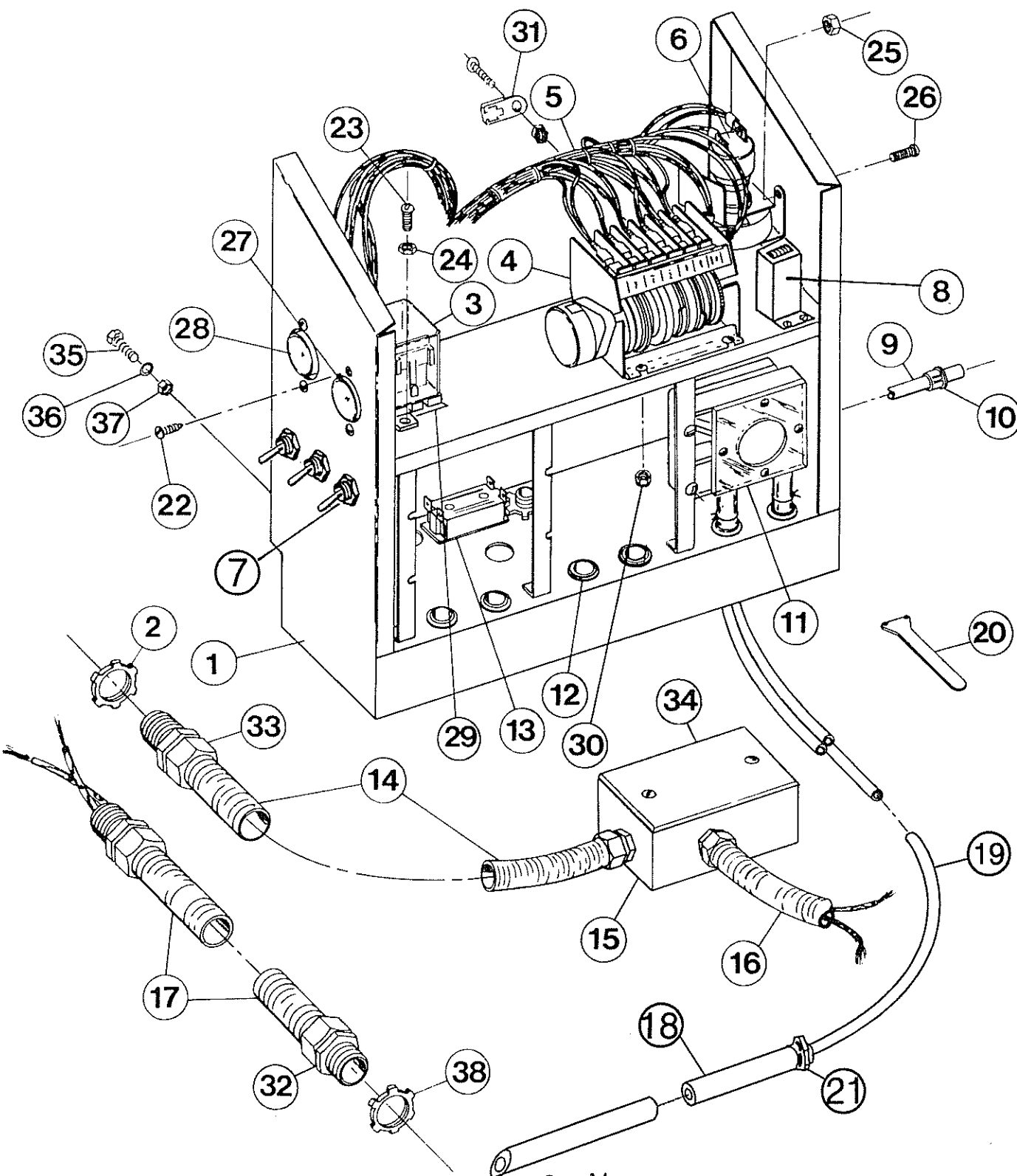


64-0100
CONTROL SYSTEM ASSEMBLY
(120 SECONDS)

American Dish Service

Ref No.	Part No.	No. Req.	Description
1	81-6402	1	CONTROL BOX ASSEMBLY
2	91-4144	2	CONDUIT LOCKNUT, 1/2"
3	91-3003	1	INSTANT START RELAY
4	91-3005	1	TIMER, 120 SECONDS
5	91-5001	1	WIRE HARNESS
6	91-3007	1	MOTOR RELAY (MERCURY RELAY)
-	91-3014	-	MERCURY RELAY TUBE (REPLACEMENT PART)
7	91-3009	1	PRIME SWITCH, MOMENTARY TOGGLE
8	91-3049	1	COUNTER, ELECTRIC
9	93-1005	1	CHEMICAL DISCHARGE TUBE, RED (SOLD BY THE FOOT)
9	93-1004	1	CHEMICAL DISCHARGE TUBE, GREEN (SOLD BY THE FOOT)
9	93-1003	1	CHEMICAL DISCHARGE TUBE, BLUE (SOLD BY THE FOOT)
10	91-4001	3	GROMMET
11	64-0001	3	CHEMICAL PUMP ASSEMBLY (PERISTALTIC)
12	91-4002	6	GROMMET
13	91-3008	1	SWITCH, DPST (MASTER SWITCH)
14	91-5156	1	CONDUIT, SEALTITE, 1/2" X 26" (SOLD BY THE FOOT)
15	91-4003	1	JUNCTION BOX, 2 X 4 BELL
16	91-5156	1	CONDUIT, SEALTITE 1/2" X 10 1/2" (SOLD BY THE FOOT)
17	91-5156	1	CONDUIT, SEALTITE 1/2" X 29" (SOLD BY THE FOOT)
18	83-6407	3	TUBE STIFFENER
19	93-1005	1	CHEMICAL SUCTION TUBE, RED (SOLD BY THE FOOT)
19	93-1004	1	CHEMICAL SUCTION TUBE, GREEN (SOLD BY THE FOOT)
19	93-1003	1	CHEMICAL SUCTION TUBE, BLUE (SOLD BY THE FOOT)
20	99-1004	1	TIMER ADJUSTMENT KEY
21	98-1605	3	TUBE CLAMP
22	98-1102	4	SCREW, RH, SS, 6-32 X 1/4
23	98-1104	2	SCREW, RH, SS, 6-32 X 1/2
24	98-2101	2	NUT, SS, 6-32
25	98-2201	9	NUT, SS, LOCK, 8-32
26	98-1204	11	SCREW, RH, SS, 8-32 X 1/2
27	91-3002	1	PUSH BUTTON SWITCH, RED, START
28	91-3001	1	PUSH BUTTON SWITCH, BLACK, FILL
29	91-3011	1	RELAY SOCKET
30	98-2202	4	NUT, SS, 8-32
31	91-5007	3	WIRING CLAMP (HOLD DOWN)
32	91-4141	4	FITTING, SEALTITE, 1/2"
33	91-4141	2	FITTING, SEALTITE, 1/2"
34	91-4004	1	JUNCTION BOX COVER
35	98-1423	4	BOLT, HH, SS, 1/4-20 X 1/2
36	98-2402	4	1/4" BRASS WASHER
37	98-2507	4	LOCKNUT, SS, 1/4-20
38	91-4134	4	CONDUIT LOCKNUT, 1/2"
--	96-1002	1	CONTROL BOX LOCK (NOT SHOWN)
--	87-6401	1	CONTROL BOX COVER (NOT SHOWN)

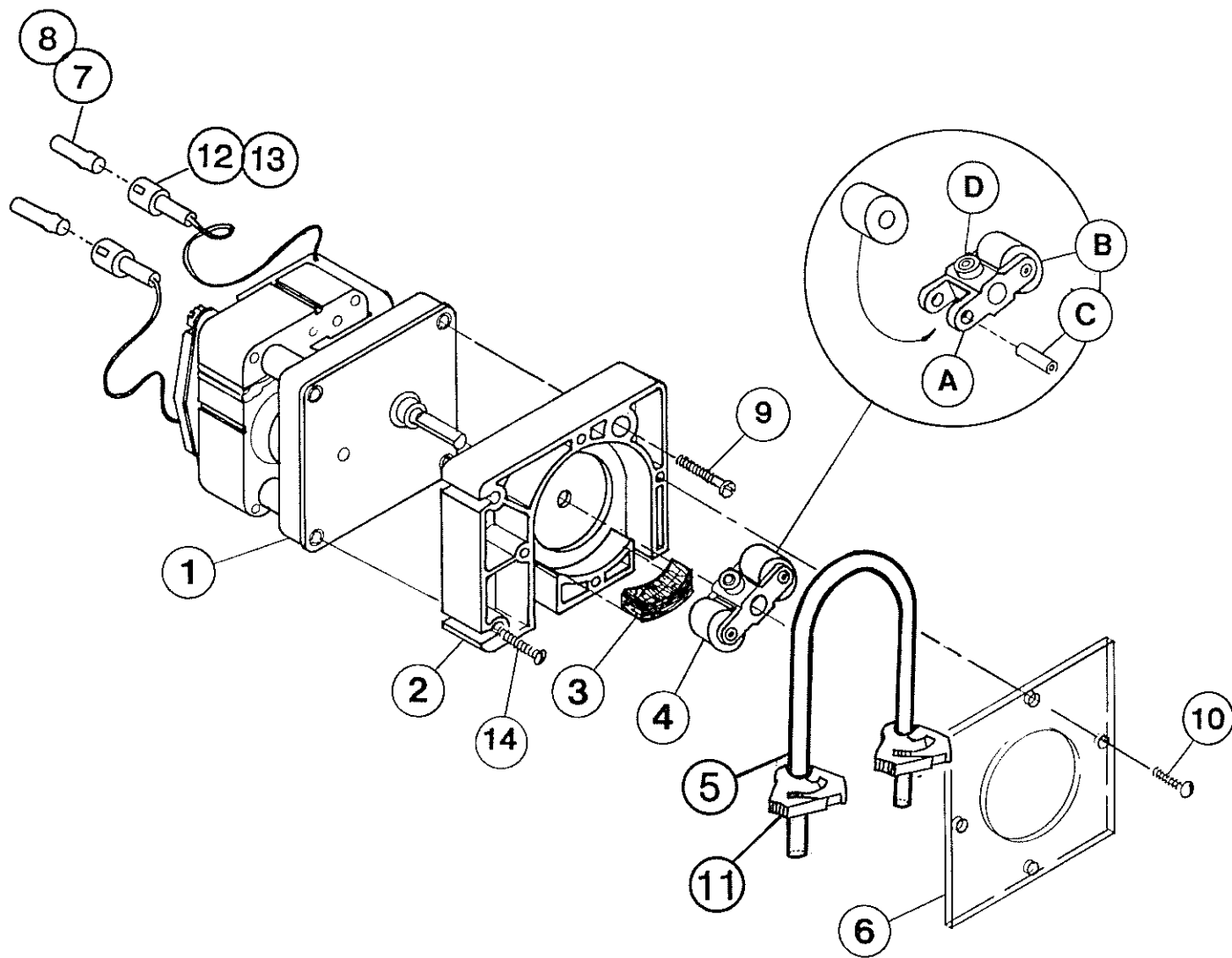
CONTROL SYSTEM ASSEMBLY



American Dish Service

Ref No.	Part No.	No. Req.	Description
1	81-6402	1	CONTROL BOX ASSEMBLY
2	91-4144	2	CONDUIT LOCKNUT, 1/2"
3	91-3003	1	INSTANT START RELAY
4	91-3004	1	TIMER, 90 SECONDS
5	91-5001	1	WIRE HARNESS
6	91-3007	1	MOTOR RELAY (MERCURY RELAY)
-	91-3014	-	MERCURY RELAY TUBE (REPLACEMENT PART)
7	91-3009	3	PRIME SWITCH, MOMENTARY TOGGLE
8	91-3049	1	COUNTER, ELECTRIC
9	93-1005	1	CHEMICAL DISCHARGE TUBE, RED (SOLD BY THE FOOT)
9	93-1004	1	CHEMICAL DISCHARGE TUBE, GREEN (SOLD BY THE FOOT)
9	93-1003	1	CHEMICAL DISCHARGE TUBE, BLUE (SOLD BY THE FOOT)
10	91-4001	3	GROMMET
11	64-0001	3	CHEMICAL PUMP ASSEMBLY (PERISTALTIC)
12	91-4002	6	GROMMET
13	91-3008	1	SWITCH, DPST (MASTER SWITCH)
14	91-5156	1	CONDUIT, SEALTITE, 1/2" X 26" (SOLD BY THE FOOT)
15	91-4003	1	JUNCTION BOX, 2 X 4 BELL
16	91-5156	1	CONDUIT, SEALTITE 1/2" X 10 1/2" (SOLD BY THE FOOT)
17	91-5156	1	CONDUIT, SEALTITE 1/2" X 29" (SOLD BY THE FOOT)
18	83-6407	3	TUBE STIFFENER
19	93-1005	1	CHEMICAL SUCTION TUBE, RED (SOLD BY THE FOOT)
19	93-1004	1	CHEMICAL SUCTION TUBE, GREEN (SOLD BY THE FOOT)
19	93-1003	1	CHEMICAL SUCTION TUBE, BLUE (SOLD BY THE FOOT)
20	99-1004	1	TIMER ADJUSTMENT KEY
21	98-1605	3	TUBE CLAMP
22	98-1102	4	SCREW, RH, SS, 6-32 X 1/4
23	98-1104	2	SCREW, RH, SS, 6-32 X 1/2
24	98-2101	2	NUT, SS, 6-32
25	98-2201	9	NUT, SS, LOCK, 8-32
26	98-1204	11	SCREW, RH, SS, 8-32 X 1/2
27	91-3002	1	PUSH BUTTON SWITCH, RED, START
28	91-3001	1	PUSH BUTTON SWITCH, BLACK, FILL
29	91-3011	1	RELAY SOCKET, INSTANT START
30	98-2202	4	NUT, SS, 8-32
31	91-5007	3	WIRING CLAMP (HOLD DOWN)
32	91-4141	4	FITTING, SEALTITE, 1/2"
33	91-4141	2	FITTING, SEALTITE, 1/2"
34	91-4004	1	JUNCTION BOX COVER
35	98-1423	4	BOLT, HH, SS, 1/4-20 X 1/2
36	98-2402	4	1/4" BRASS WASHER
37	98-2507	4	LOCKNUT, SS, 1/4-20
38	91-4144	4	CONDUIT LOCKNUT, 1/2"
--	96-1002	1	CONTROL BOX LOCK (NOT SHOWN)
--	87-6401	1	CONTROL BOX COVER (NOT SHOWN)

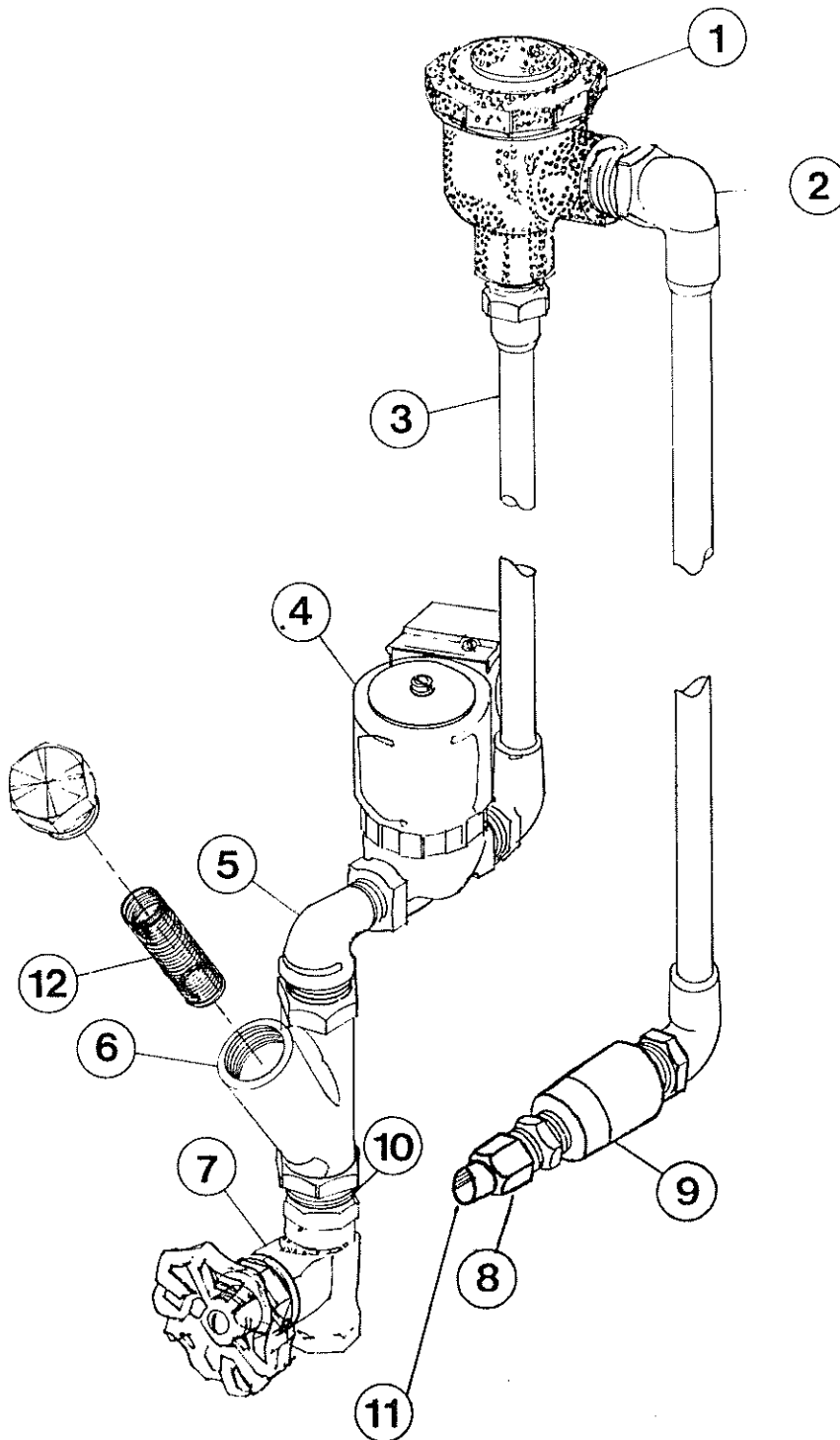
CHEMICAL PUMP ASSEMBLY



64-0001 CHEMICAL PUMP ASSEMBLY

Page 17

FRESH WATER PLUMBING ASSEMBLY

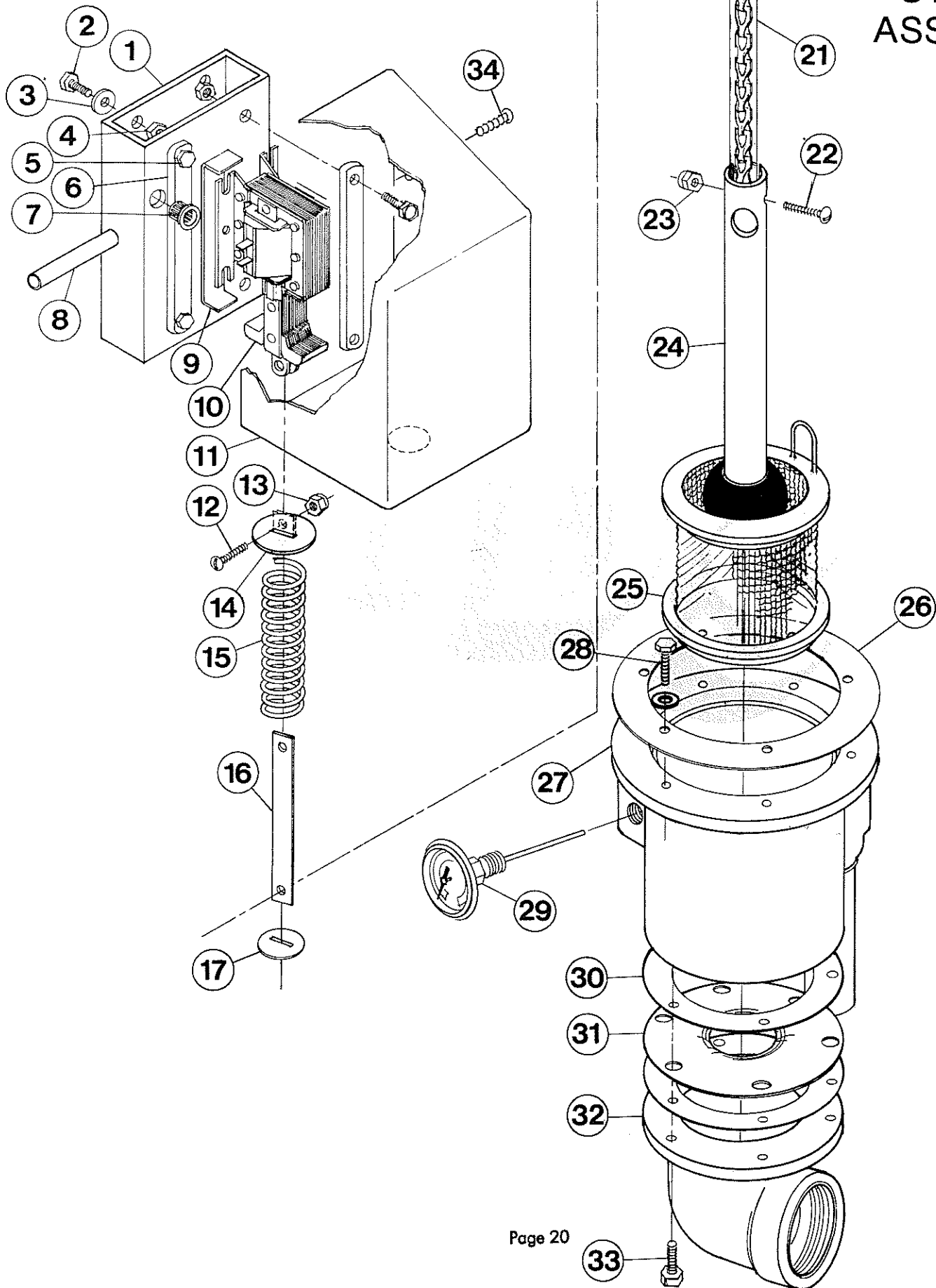


65-0100
FRESH WATER
PLUMBING ASSEMBLY

American Dish Service

Ref. No.	Part No.	No. Req.	Description
1	92-5045	1	VACUUM BREAKER VALVE, WATTS
-	92-5047	-	VACUUM BREAKER POPPET KIT (REPLACEMENT), WATTS
-	92-5049	-	VACUUM BREAKER CAP (REPLACEMENT PART), WATTS
2	85-6502	1	VACUUM BREAKER OUTLET PIPE ASSEMBLY
-	92-1100	2	ELBOW FITTING, 5/8 COMP X 1/2 MPT
-	92-1040	1	TUBING, 5/8 O.D. X 34", SS (SOLD BY THE FOOT)
3	85-6501	1	VACUUM BREAKER INLET PIPE ASSEMBLY
-	92-1058	1	FITTING, 5/8 COMP X 1/2 MPT
-	92-1100	1	ELBOW FITTING, 5/8 COMP X 1/2 MPT
-	92-1040	1	TUBING, 5/8 O.D. X 38", SS (SOLD BY THE FOOT)
4	92-5015	1	SOLENOID VALVE
-	92-5025	-	SOLENOID VALVE BODY (REPLACEMENT PART)
-	92-5017	-	SOLENOID VALVE COIL (REPLACEMENT PART)
5	92-1006	1	1/2" STREET ELL, BRASS
6	92-9001	1	LINE STRAINER
7	92-5054	1	SHUT-OFF VALVE
8	92-1007	1	FITTING, 1/2 COMP X 1/2" MPT
9	92-5027	1	STRATA-FLOW CHECK VALVE
10	92-1008	2	1/2" CLOSE NIPPLE
11	94-1041	1	FRESH WATER SUPPLY TUBE (TO PUMP) (SOLD BY THE FOOT)
12	92-9002	-	SCREEN (REPLACEMENT PART)

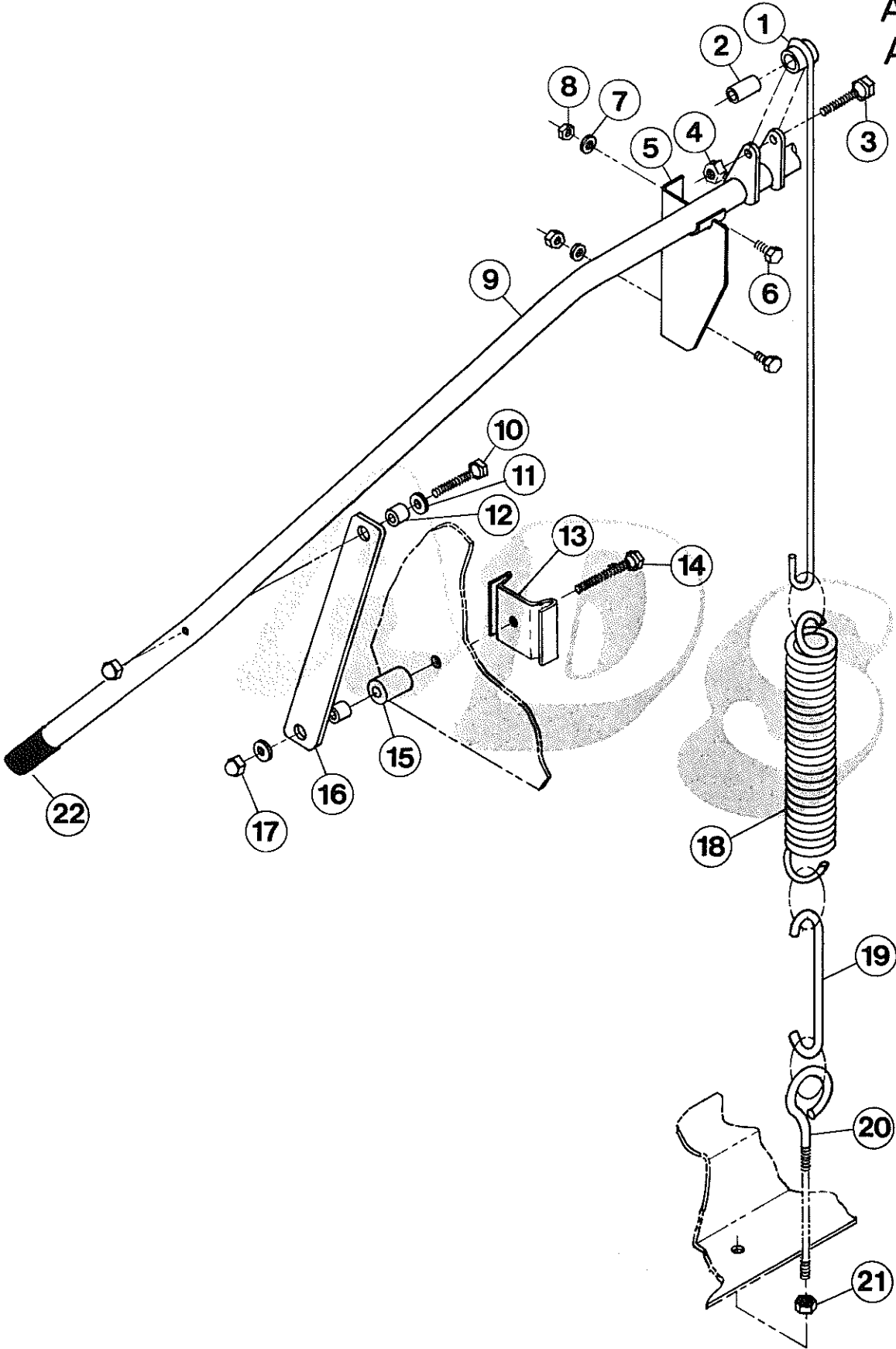
DRAIN SYSTEM ASSEMBLY



American Dish Service

Ref.No.	Part No.	No.Req.	Description
1	84-6602	1	SOLENOID BASE
2	98-1423	4	BOLT, HH, SS, ¼-20 X ½
3	98-2402	10	WASHER, BRASS, ¼
4	98-2401	4	NUT, SS, ¼-20
5	98-1423	4	BOLT, HH, SS, ¼-20 X ½
6	84-6603	2	SOLENOID RETAINING BAR
7	91-4005	1	GROMMET, PLASTIC
8	84-6601	1	CONDUIT
9	86-6604	1	SOLENOID STOP
10	91-2001	1	SOLENOID
11	85-6601	1	SOLENOID COVER
12	98-1205	1	SCREW RH, SS, 8-32 X 5/8
13	98-2201	1	NUT, LOCK, SS, 8-32
14	86-6607	1	1-5/16 SLOTTED WASHER (LARGE)
15	98-3001	1	SPRING
16	86-6605	1	LINK
17	86-6606	1	1-1/16 SLOTTED WASHER (SMALL)
18	98-1205	1	SCREW, RH, SS, 8-32 X 5/8
19	98-2201	1	NUT, LOCK, SS, 8-32
20	89-6603	1	CHAIN - MAKE FROM 98-9001
21	84-6604	1	CHAIN COVER - MAKE FROM 93-0001
22	98-1311	1	SCREW, RH, SS, 10-32 X 1 3/8
23	98-2301	1	NUT, LOCK, SS, 10-32
24	81-8601	1	DRAIN PLUG ASSY.
-	84-6608	-	DRAIN TUBE (REPLACEMENT PART)
-	83-6601	-	DRAIN BALL (REPLACEMENT PART)
25	85-6602	1	SCREEN, SUMP
26	89-6601	1	SUMP GASKET
27	85-6603	1	SUMP ASSY.
28	98-1423	6	BOLT HH, SS, ¼-20 X ½
29	99-1001	1	TEMPERATURE GAUGE
30	89-6602	2	DRAIN ELBOW GASKET
31	86-6601	1	DRAIN SEAT
32	82-6602	1	DRAIN ELBOW
33	98-1507	6	BOLT, 5/16-18 X 7/8 HH, SS
34	98-1414	2	SCREW, SS, TH, 1/4-20 X 1/2

DOOR
ACTUATOR
ASSEMBLY



67-0100
DOOR ACTUATOR ASSEMBLY

American Dish Service

Ref.No.	Part No.	No. Req.	Description
1	85-6701	2	SPRING EXTENSION
2	98-4002	2	BUSHING, BRONZE
3	98-1510	2	BOLT, 5/16-18 X 1½, HH, SS
4	98-2502	2	NUT, HH, SS, 5/16-18
5	85-6703	1	ARM SUPPORT BRACKET, LEFT
—	85-6707	1	ARM SUPPORT BRACKET, RIGHT
6	98-1423	4	BOLT, HH, SS, ¼-20 X ½
7	98-2402	4	WASHER, ¼, BRASS
8	98-2507	4	LOCKNUT 1/4-20 SS
9	85-6711	1	DOOR OPERATING ARM (LEVER ARM)
10	98-1431	2	BOLT, ¼-20 X 1 3/8, HH, SS
11	98-2404	6	WASHER, ¼, SS
12	84-6703	4	BUSHING (DOWEL 3/8)
13	86-6701	2	DOOR STOP
14	98-1432	2	BOLT, ¼-20 X 1 3/4, HH, SS
15	84-6702	2	SPACER
16	86-6702	2	DOOR LINK
17	98-2405	4	CAP LOCKNUT, ¼-20, SS
18	98-3003	2	DOOR SPRING
19	86-6703	2	SPRING EXTENSION, SECONDARY
20	98-1581	2	EYE BOLT, 5/16-18 X 6"
21	98-2502	2	NUT, HH, SS, 5/16-18
22	99-1018	2	LEVER ARM END CAP