

Model 5AG-ES by



HIGH CAPACITY "GREEN" MACHINE



Model 5AG-ES
**ENERGY STAR
RATED AT
LESS THAN
1 GALLON PER RACK**

**Double Duty Model. Features
20 1/2" door opening, air-gap
fill, dual screening. Washes
74 racks per hour with two
powerful 1 HP Pumps.**

**Wash Sheet Pans Horizontally with
the optional Pan Rack**



At American Dish Service, Quality People, Designs, and Products have been the foundations of our organization for over *45 years*.

www.americandish.com



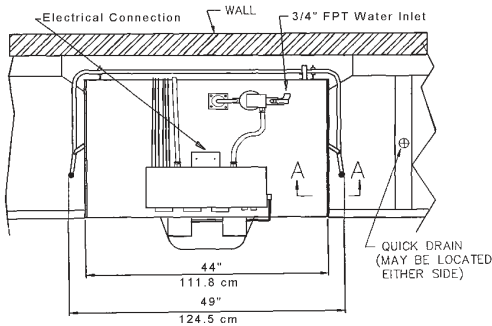
American Dish Service
Manufacturers of Ware Washing Equipment

900 Blake Street Edwardsville, KS 66111-3820 **Toll Free** (800) 922-2178 **Phone** (913) 422-3700 **Fax** (913) 422-6630

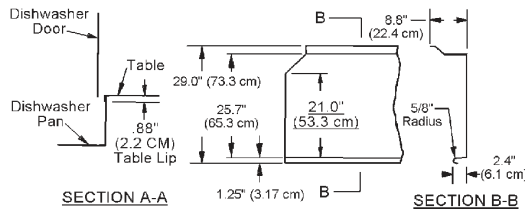
Model 5AG-ES

**SAME GREAT QUALITY
SAME GREAT RESULTS
JUST LESS WATER, ENERGY,
& CHEMICALS**

- Cleans 74 racks per hour
- Water consumption of LESS than 1 gallon per rack
- Great door clearance at 20 1/2"
- Top mount controls with auto start
- Stainless steel air gap
- Quick release spray arms
- Two high capacity 1 HP pumps
- Door safety switch - external prime switches
- Delime switch located in the control panel



TOP VIEW

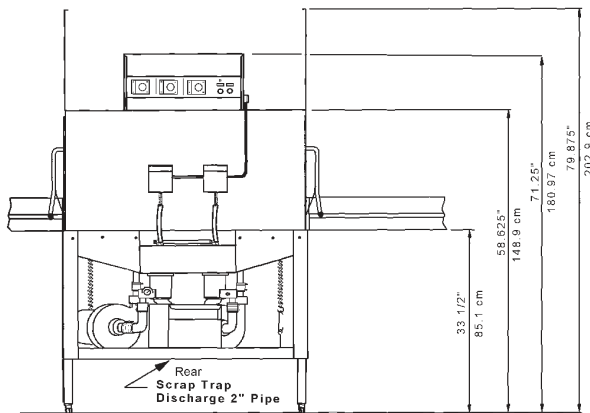


TOP VIEW
TYPICAL TABLE DETAILS

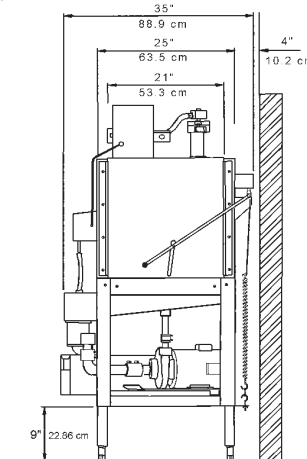


Model 5AGES Specifications

CAUTION:
Electrical and plumbing connections should be made by a qualified Service Person who will comply with all available federal, state, and local Health, Electrical, Plumbing, and Safety codes.



FRONT VIEW



SIDE VIEW

RATED CAPACITY (Racks Per Hour)	74	56	46
WASH TIME (Sec.)	50	60	75
RINSE TIME (Sec.)	7	45	60
DWELL (Sec.)	15	15	15
TOTAL CYCLE TIME (Sec.)	90	120	150

WASH TANK CAPACITY (Min.)	1.78 Gallons
WATER TEMPERATURE	120 Deg. F Min. 49 Deg. C Min.
WATER CONSUMPTION	1.78 Gallons Per Cycle 6.74 Liters Per Cycle
MOTOR (2)	1.0 HP .75 KW
ELECTRICAL RATINGS	118 Volts 18 Amp Single Phase

CONNECT TO ELECTRICAL SUPPLY SOURCE
Using 10-8 AWG Copper Wire
Circuit Protection: 30 AMP Circuit Breaker
or Fuse with a 30 AMP Rating

RACK SIZE (2)	19 3/4" x 19 3/4" 50.2 x 50.2 cm
DOOR CLEARANCE	20 1/2" x 21" 52.07 x 53 cm
WATER INLET	3/4" FPT
DRAIN (Scrap Trap)	2" Pipe
HEIGHT (Doors Open)	79.875"
HEIGHT (Doors Closed)	71.25"
WIDTH (Overall)	49"
DEPTH (Overall)	124.5 cm
SHIPPING WEIGHT	34" 428 Lbs. 194.1 kg
SHIPPING DIMENSIONS	60" L x 36" W x 78" H 152.4 cm x 91.4 cm x 198.1 cm

NOTE:
*Manufacturer reserves the right to modify these specifications in compliance with regulatory agencies and manufacturing expediency

Effective: 3/2011

© 3/2011

WARNING: Cancer and Reproductive Harm - www.P65Warnings.ca.gov

900 Blake Street Edwardsville, KS 66111-3820

ADS has built a strong history based on Customer Service, Quality and Reliability.
A Commitment to Excellence is the driving force behind American Dish Service.

Toll Free (800) 922-2178 Phone (913) 422-3700 Fax (913) 422-6630